


ES-5: EHS Management Systems

Andrew Miles, JM Huber Corp.

J.M. HUBER CORPORATION

Environmental Management Systems At Huber




A FAMILY OF SOLUTIONS

Raleigh, North Carolina
August 2008

J.M. HUBER CORPORATION

A Global Organization

- Privately held by founding family for more than 120 years
- Broadly diversified multi-national portfolio
 - Engineered materials
 - Natural resources
 - Technology-based services
- 80 locations in 20 countries
- >\$2 billion in annual sales
- About 5,000 employees



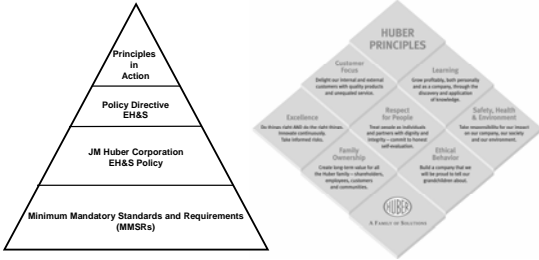
☆ = Huber Engineered Materials
 ☆ = CP Kelco
 ☆ = Huber Engineered Woods

Slide 2

J.M. HUBER CORPORATION

The Huber Principles

• Safety, Health & Environment – Take responsibility for our impact on our company, our society and our environment

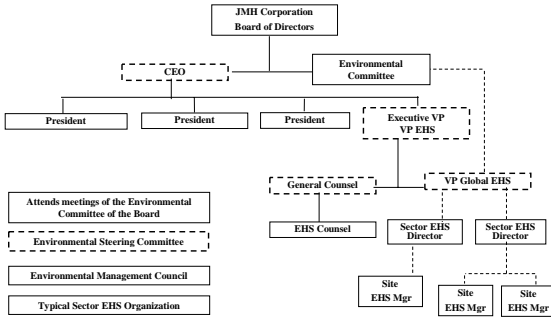


How do we put these principles into action?

Slide 3

J.M. HUBER CORPORATION

Huber Environmental Committees and Typical Sector EHS Organization



Slide 4

J.M. HUBER CORPORATION

“Excellence in Environmental Management”

- Full implementation of an effective Environmental Management System that has the elements and functionalities to:
 - Be consistent with a recognized global management system’s standard, e.g., ISO 14001;
 - Reflect Department of Justice (DOJ) and EPA guidelines for adequacy and effectiveness;
 - Leverage existing business processes (e.g., quality systems);
 - Be fully integrated with the business; and
 - Demonstrates continuous improvement in environmental performance measured by proactive indicators of performance (e.g., HEPI).

Slide 5

J.M. HUBER CORPORATION

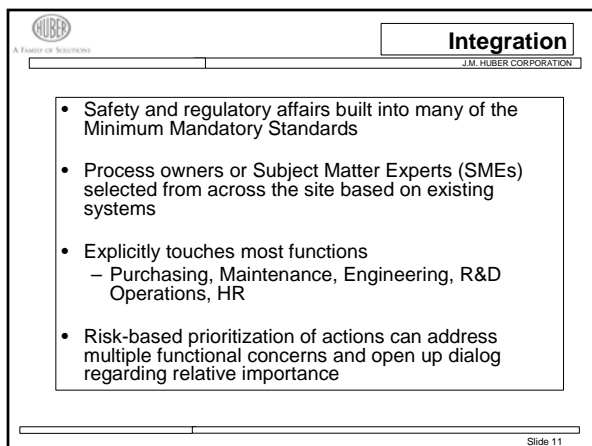
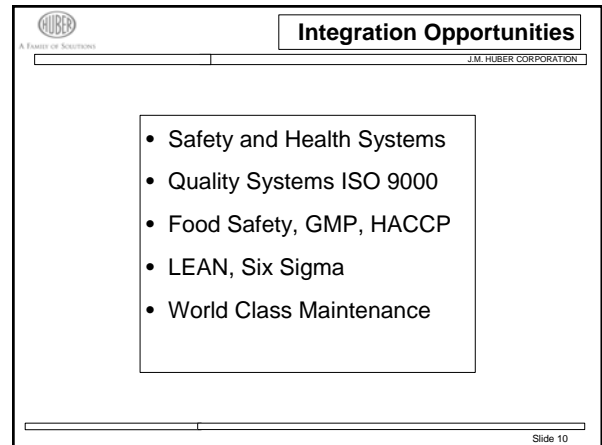
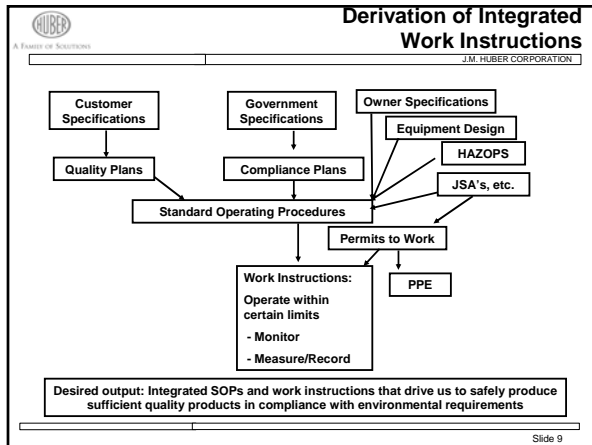
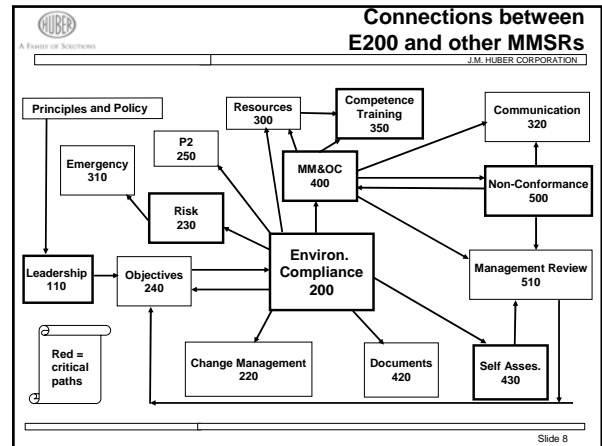
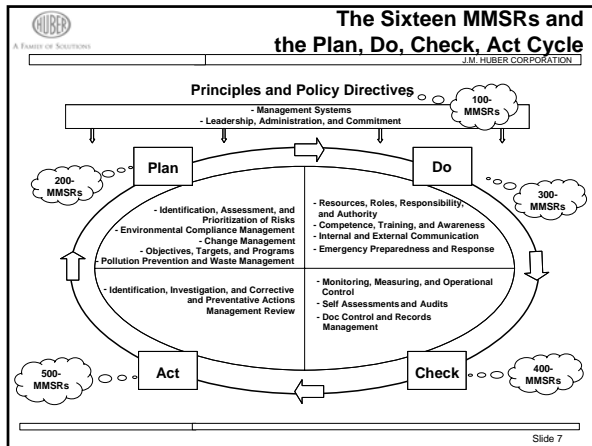
What are We Managing?

- Environmental Compliance
 - The performance specifications required by the local/state/federal government
- EH&S Risks
 - Remaining after compliance
- Changes
 - That may affect the integrity of the Management System (MS) and affect our ability to meet specifications

Slide 6

ES-5: EHS Management Systems

Andrew Miles, JM Huber Corp.



Integration


Screening and Risk Assessment SEVERITY (S) Descriptors

Severity Classification Numerical Value	Description	Cost (Million \$)	Relative Clean-Up Cost Examples	Public Reputation	Customer Impact	Government or Regulatory Impact	Emissions of Regulated Pollutants (tons/year)	Safety Incident
4	Catastrophic	>10	Loss of Public Water Supply	Continuous Bad National News	Loss of Business or Segment	Jail or fine > \$10 million	10,000	Fatality
3	Serious	5-10	Long Term Managed Remediation	National News Attention	Lost Customers	Prosecution	1,000	Lost Time
2	Minor	1-5	Off-site Spill with Clean-Up	Local News Attention	Missing Customer Specification	Notice Of Violation with Fine	100	Medical Treatment
1	Negligible	<1	On-site Spill with No Residual Impact	Local Complaints	Complaint Resolved	Permit Exceedance	10	First Aid

Slide 12


ES-5: EHS Management Systems

Andrew Miles, JM Huber Corp.

 **What is a SME?** J.M. HUBER CORPORATION


- **Subject Matter Expert (SME) otherwise known as:**
 - The process owner
 - Most knowledgeable person
 - Person who leads the development and assessment of the activity or element
 - Process champion
- **Recommended SMEs include:**
 - Site Manager
 - Quality Manager
 - EH&S Manager
 - Engineering Manager
 - Maintenance / Facilities Manager
 - Human Resources
 - Production Supervisor
 - Employee Trainer
 - Purchasing/Procurement Manager

Slide 13

 **Barriers to Implementation** J.M. HUBER CORPORATION

- Perceived bureaucracy
- Multiple competing priorities at site and business
- EHS staff capabilities
- Who's on first?
- Resistance to change

Slide 14

 **Benefits of Implementing an EMS** J.M. HUBER CORPORATION

- Legitimization of EHS function
- Increased proactive involvement with business process
- Spreading the load and responsibilities
- Early involvement in changes
- Systematic compliance and risk management - improved performance
- ~~Integration of significant risk reduction and compliance needs into business plans~~

Slide 15